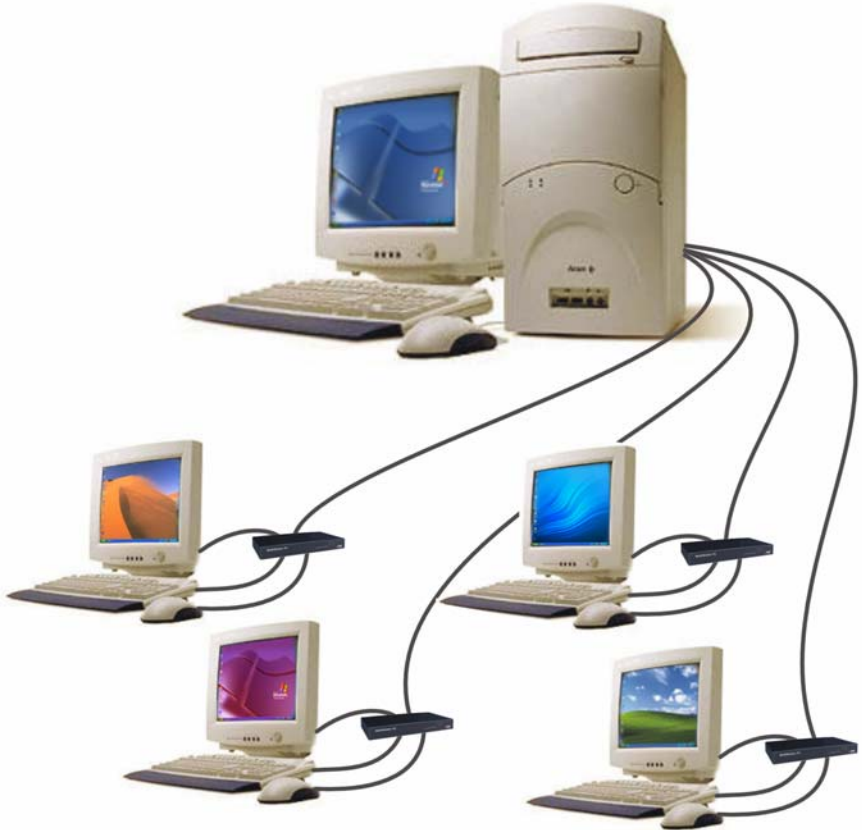


MultiStation PC Quad

PC SHARING SYSTEM

INSTALLATION AND OPERATIONS MANUAL



10707 Stancliff Road
Houston, Texas 77099

Phone: (281) 933-7673
WWW.ROSE.COM

LIMITED WARRANTY

Rose Electronics® warrants the MultiStation PC Quad™ to be in good working order for one year from the date of purchase from Rose Electronics or an authorized dealer. Should this product fail to be in good working order at any time during this one-year warranty period, Rose Electronics will, at its option, repair or replace the Unit as set forth below. Repair parts and replacement units will be either reconditioned or new. All replaced parts become the property of Rose Electronics. This limited warranty does not include service to repair damage to the Unit resulting from accident, disaster, abuse, or unauthorized modification of the Unit, including static discharge and power surges.

Limited Warranty service may be obtained by delivering this unit during the one-year warranty period to Rose Electronics or an authorized repair center providing a proof of purchase date. If this Unit is delivered by mail, you agree to insure the Unit or assume the risk of loss or damage in transit, to prepay shipping charges to the warranty service location, and to use the original shipping container or its equivalent. You must call for a return authorization number first. Under no circumstances will a unit be accepted without a return authorization number. Contact an authorized repair center or Rose Electronics for further information.

ALL EXPRESS AND IMPLIED WARRANTIES FOR THIS PRODUCT INCLUDING THE WARRANTIES OF MERCHANTABILITY AND FITNESS FOR A PARTICULAR PURPOSE, ARE LIMITED IN DURATION TO A PERIOD OF ONE YEAR FROM THE DATE OF PURCHASE, AND NO WARRANTIES, WHETHER EXPRESS OR IMPLIED, WILL APPLY AFTER THIS PERIOD. SOME STATES DO NOT ALLOW LIMITATIONS ON HOW LONG AN IMPLIED WARRANTY LASTS, SO THE ABOVE LIMITATION MAY NOT APPLY TO YOU.

IF THIS PRODUCT IS NOT IN GOOD WORKING ORDER AS WARRANTIED ABOVE, YOUR SOLE REMEDY SHALL BE REPLACEMENT OR REPAIR AS PROVIDED ABOVE. IN NO EVENT WILL ROSE ELECTRONICS BE LIABLE TO YOU FOR ANY DAMAGES INCLUDING ANY LOST PROFITS, LOST SAVINGS OR OTHER INCIDENTAL OR CONSEQUENTIAL DAMAGES ARISING OUT OF THE USE OF OR THE INABILITY TO USE SUCH PRODUCT, EVEN IF ROSE ELECTRONICS OR AN AUTHORIZED DEALER HAS BEEN ADVISED OF THE POSSIBILITY OF SUCH DAMAGES, OR FOR ANY CLAIM BY ANY OTHER PARTY.

SOME STATES DO NOT ALLOW THE EXCLUSION OR LIMITATION OF INCIDENTAL OR CONSEQUENTIAL DAMAGES FOR CONSUMER PRODUCTS, SO THE ABOVE MAY NOT APPLY TO YOU. THIS WARRANTY GIVES YOU SPECIFIC LEGAL RIGHTS AND YOU MAY ALSO HAVE OTHER RIGHTS WHICH MAY VARY FROM STATE TO STATE.

NOTE: This equipment has been tested and found to comply with the limits for a Class B digital device, pursuant to Part 15 of the FCC Rules. These limits are designed to provide reasonable protection against harmful interference when the equipment is operated in a commercial environment. This equipment generates, uses, and can radiate radio frequency energy and, if not installed and used in accordance with the instruction manual, may cause harmful interference to radio communications. Operation of this equipment in a residential area is likely to cause harmful interference in which case the user will be required to correct the interference at his own expense.

IBM, AT, and PS/2 are trademarks of International Business Machines Corp. Microsoft and Microsoft Windows are registered trademarks of Microsoft Corp. Any other trademarks mentioned in this manual are acknowledged to be the property of the trademark owner.

Copyright Rose Electronics 2004. All rights reserved.

No part of this manual may be reproduced, stored in a retrieval system, or transcribed in any form or any means, electronic or mechanical, including photocopying and recording, without the prior written permission of Rose Electronics.

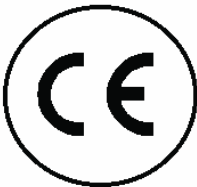
**FEDERAL COMMUNICATIONS COMMISSION
AND INDUSTRY CANADA
RADIO-FREQUENCY INTERFERENCE STATEMENTS**

This equipment generates, uses and can radiate radio frequency energy and if not installed and used properly, that is in strict accordance with the manufacturer's instructions may cause interference to radio communication. It has been tested and found to comply with the limits for a Class B digital device in accordance with the specifications of Part 15 of FCC rules, which are designed to provide reasonable protection against such interference when the equipment is operated in a commercial environment. Operation of this equipment in a residential area is likely to cause interference, in which case the user at his own expense will be required to take whatever measures may be necessary to correct the interference. Changes or modifications not expressly approved by the party responsible for compliance could void the user's authority to operate the equipment.

This digital apparatus does not exceed the Class B limits for radio noise emission from digital apparatus set out in the Radio Interference Regulation of Industry Canada.

Le présent appareil numérique n'émet pas de bruits radioélectriques dépassant les limites applicables aux appareils numériques de la classe B prescrites dans le Règlement sur le brouillage radioélectrique publié par Industrie Canada.

**EUROPEAN UNION DECLARATION OF CONFORMITY
ACCORDING TO COUNCIL DIRECTIVE 89/336EEC & 73/23EEC**



This equipment is in conformity with the protection requirements of the following Council Directives:

The Declaration of Conformity is based upon compliance of the product with the following harmonized standards:

EN55022: 1998	EN61000-4-5: 1995
EN55024: 1998	EN61000-4-6: 1996
EN61000-4-2: 1995	EN61000-4-11: 1994
EN61000-4-3: 1995	EN60950: 2000
EN61000-4-4: 1995	

TABLE OF CONTENTS

Contents

Disclaimer	1
System introduction	1
Features.....	2
Compatibility	3
Package contents	3
Hardware	4
Cables.....	5
Installation.....	6
Pre-installation requirements.....	6
Installing the PCI card.....	7
Installing the Remote user module	7
Applying power	8
Installation - CD selection menu	9
Installing the software	9
User Operation.....	12
Service Information	16
Maintenance and Repair.....	16
Technical Support.....	16
Safety.....	17

Figures

Figure 1. Hardware	4
Figure 2. PCI card.....	7
Figure 3. Remote user module	7
Figure 4. MultiStation PC Quad selection menu.....	9
Figure 5. Software license agreement.....	10
Figure 6. User information	10
Figure 7. Destination folder.....	11
Figure 8. Installation successful.....	11
Figure 9. Console window	12
Figure 10. Station Properties	13
Figure 11. Station options	13
Figure 12. Start/Stop window.....	14
Figure 13. Test screen.....	14
Figure 14. Broadcast message screen.....	15
Figure 15. Message box	15

Appendices

Appendix A. General specifications.....	21
Appendix B. Parts and cables.....	22
Appendix C. Tested hardware list.....	22

Disclaimer

While every precaution has been taken in the preparation of this manual, the manufacturer assumes no responsibility for errors or omissions. Neither does the manufacturer assume any liability for damages resulting from the use of the information contained herein. The manufacturer reserves the right to change the specifications, functions, or circuitry of the product without notice.

The manufacturer cannot accept liability for damages due to misuse of the product or other circumstances outside the manufacturer's control. The manufacturer will not be responsible for any loss, damage, or injury arising directly or indirectly from the use of this product.

System introduction

Thank you for choosing the Rose Electronics® MultiStation PC Quad™. The MultiStation PC Quad is the result of Rose Electronics commitment to providing state-of-the-art solutions for today's demanding workplace. The MultiStation PC Quad has proven to be a valuable investment for any business, home, or office that has a need to share a common computer between four additional users.

The MultiStation PC Quad is a uniquely designed product that effectively makes a single computer act like 5 independent computer systems, one locally and 4 remote. The system consists of a PCI card and up to four remote user modules. The PCI card installs in an unused PCI slot in the computer being shared. The remote user modules connect to a keyboard, monitor, mouse, printer, serial device, microphone and speakers. The PCI card and remote user modules are connected together with up to 225 feet of industry standard CATx shielded, solid core twisted-pair cable terminated with RJ45 connectors.

Using the MultiStation PC Quad to expand the use of a common computer has several advantages that make it convenient for the users. With the MultiStation PC Quad you get all the benefits of up to four computers without the expense of purchasing additional computers. Each user can work independently on the same or different application. One user can be updating the company's financials, another user developing a software application, another surfing the internet and another playing solitaire with no interference. Each user can have their own Windows desktop, and share a common modem and connect and surf the web or send and receive E-mail over a single phone or DSL line with a single Internet connection. In a network environment, users can share the PC's network adapter and connection.

Features

- With the MultiStation PC Quad you get all the benefits of up to four computers without the expense of purchasing additional computers
- Allows multiple users to use one computer at the same time
- Video resolution up to:
 - 1600 x 1200 High Color
 - 1024 x 768 True Color
 - 800 x 600 True Color
 - 640 x 480 True Color
- Each user can work independently on the same or different application with no interference
- Each user can have their own Windows desktop
- Each user can have their own printer and serial device or use the peripherals connected to the shared computer
- Users share a common network connection and have access to the network servers and printers
- Locate the additional users up to 225 feet away from the PC using standard STP CATx cable
- Saves equipment cost, software cost, peripherals, networking, and other hardware costs
- Easy to install and maintain

Compatibility

Computers	PC compatible running Microsoft Windows XP (SP1 & SP2) or 2000 (SP2) P III or higher computer, Athlon AMD, Intel Celeron, and Intel, 848P + Chipsets.
Ram	256 MB Ram + 128 MB per additional user
Monitors	VGA to UXGA
Keyboards	PS/2
Mouse	PS/2

NOTE: The MultiStation PC Quad's PCI card is 4.8" high and 12.4" long. Make sure your PC chassis can accommodate this size PCI card.

Package contents

The package contents consist of the following:

- The MultiStation PC Quad PCI card
- Remote user modules
- MultiStation PC Quad installation software (CD)
- Installation and operations manual

If the package contents are not correct, contact Rose Electronics or your reseller, so the problem can be quickly resolved.

Rose Electronics web site

Visit our web site at www.rose.com for MultiStation PC Quad product software updates and additional information on other products that are designed for data center applications, classroom environments and other applications.

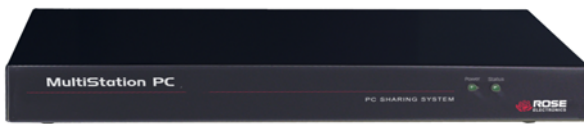
About this manual

This manual covers the installation and operation of the MultiStation PC Quad model.

Registration

Register your copy for future updates by registering at:
http://www.rose.com/htm/MultiStation_PC/pc-online-registration.htm

Hardware

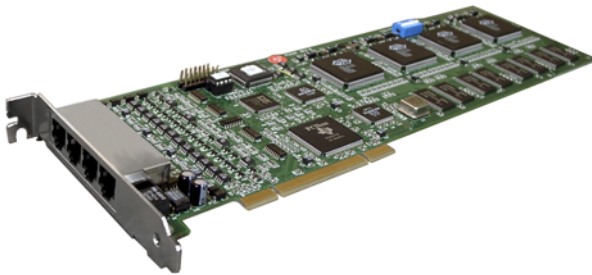


User module

Front



Rear



PCI card

Figure 1. Hardware

Connectors:

Front

- Indicators 2-LEDs (Power and status)

Rear

- Keyboard / Mouse Mini Din6
- Video HD15F
- LAN Rj45
- USB Type A
- Printer DB25F
- COM1 DB9M
- MIC / Speakers 3.5mm

PCI card

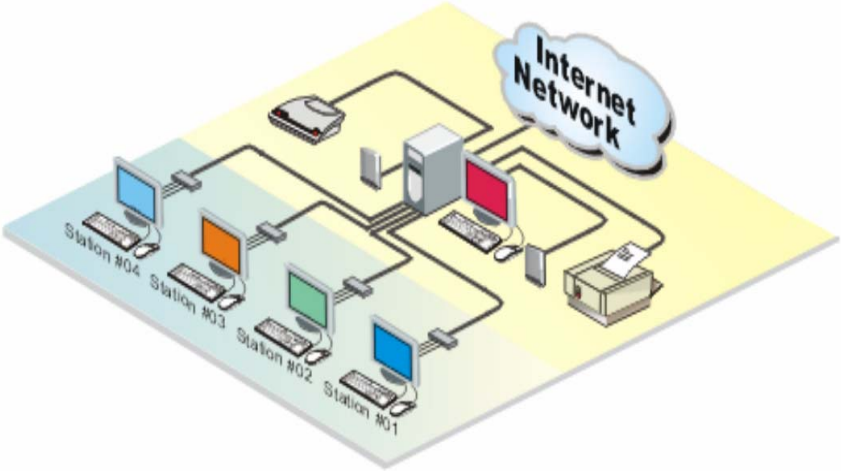
- RJ45 CATx cable connection

Note: The 6 Dip Switches located on the PCI card are factory set and should all be in the "OFF" position.

Cables

PC to Remote user module

The PCI cards RJ45 connectors are connected to the Remote user modules with up to 225 feet of standard CATx STP “solid core” cable terminated with RJ45 connectors (included). Rose Electronics cable part number CAB-08STPnnn. The maximum length of CATx cable that should be used is 225 feet (optional).



4 remote users up to 225 feet away from the shared computer, each operating independently from each other

Installation

Please refer to the safety section first before proceeding with any installation or configuration of the MultiStation PC Quad.

Installation of the MultiStation PC Quad is an addition to Microsoft Windows XP or Windows 2000 operating system and must be performed correctly. Due to the variations in computer systems, installation of the MultiStation PC Quad on non-approved hardware may require assistance.
(See Appendix C for tested hardware list)

Please follow the instructions step by step to insure proper installation.

Pre-installation requirements

The MultiStation PC Quad is designed for Microsoft 32-bit Windows operating systems based on Intel x86 hardware architecture. In order to install and use the software, your computer must meet the following system requirements:

- Intel Pentium III, Celeron, AMD Athlon 500 MHz or higher
- Intel 848P + chipsets
- 256MB RAM (512 MB RAM recommended)
- Windows 2000 service pack 2 or higher or
Windows XP service pack 1 or higher

The above configuration is for two concurrent users. To add other users you will need to add another 128 MB RAM for each additional user. Microsoft Windows XP or 2000 must be installed prior to installing MultiStation PC Quad.

See the troubleshooting section if problems occur.

Installation of the MultiStation PC Quad consists of the following four steps. Make sure that the computer is powered down and unplugged from the main electrical outlet.

1. Installing the MultiStation PC Quad's PCI card
2. Connecting a keyboard, monitor, and mouse to the remote user modules and connecting each remote user module to the MultiStation PC Quad's PCI card with CATx cable
3. Applying power
4. Installing the software

Installing the PCI card



Ground yourself to a grounded metal object before installing the PCI card

1. Remove the computer cover and locate an unused PCI slot on the motherboard
2. Install the MultiStation PC Quad PCI card in the PCI slot by firmly applying uniform pressure on the top of the card until it seats properly in the PCI slot
3. Secure the PCI card with the proper size screw
4. Replace the computer cover

NOTE: DO NOT CHANGE DIP SWITCH SETTINGS. ALL SHOULD BE IN THE "OFF" POSITION

Figure 2. PCI card

Installing the Remote user module

(NOTE: Power to the computer should be off)

Connect the remote keyboard, monitor, and mouse to the corresponding connectors on the remote user module. The local computer's keyboard, monitor, mouse, and other cable connections such as a printer, scanner, or USB cables should already be connected to the corresponding ports on the computer.

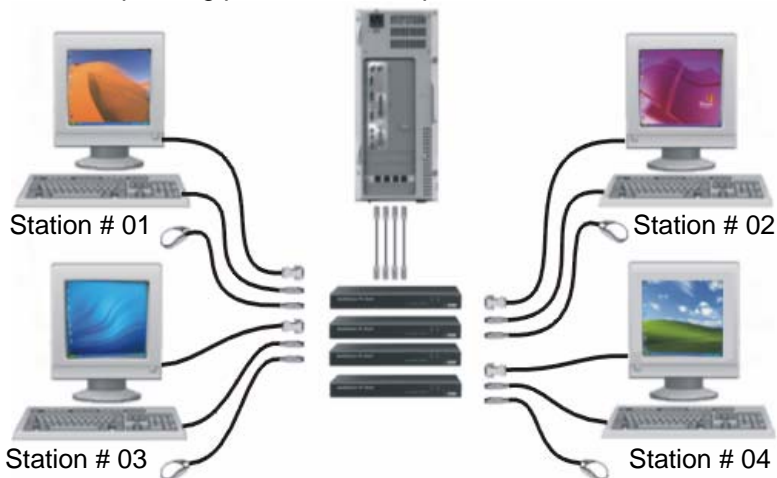


Figure 3. Remote user module

Connect the CATx cable from the Remote user module's RJ45 connector to the RJ45 connector on the MultiStation PC Quad's PCI card

Applying power

Turn on both the local computer's monitor and the remote video monitor and turn on the shared computer. Windows will automatically recognize the MultiStation PC Quad PCI card as new hardware and will prompt you to install the appropriate driver. Continue installing the drivers and after they are installed, re-start the computer when the re-start computer prompt displays. This will load the MultiStation PC Quad's driver.

Installation - CD selection menu

The MultiStation PC Quad selection menu (see Figure 4), automatically displays when you insert the MultiStation PC Quad CD.

The selection menu allows you to:

- Install the software onto your PC
- View the Quick Start Guide
- View the Product Datasheet, and
- View the Product Manual.

You can register your product with Rose Electronics. Click the on-line registration link to display the on-line registration form from our web site, fill in the registration data and click on “Submit Form”. It’s quick, easy, and confidential. Registration provides you with complementary technical support, notification of product announcements, updates, events, and other special offers.

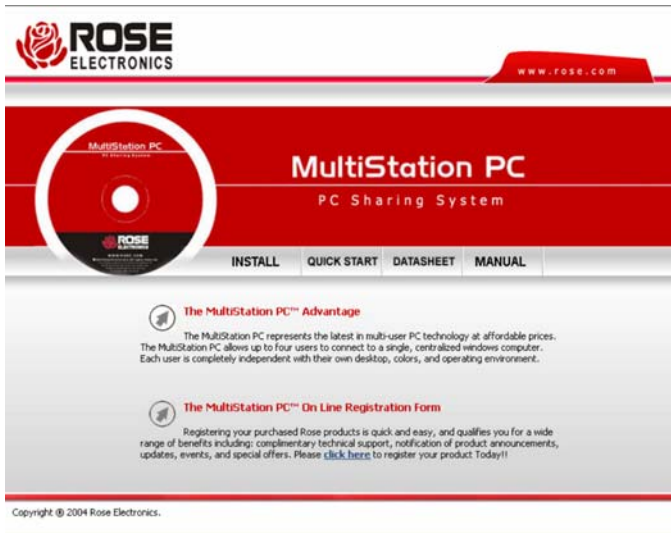


Figure 4. MultiStation PC Quad selection menu

Installing the software

To install the MultiStation PC Quad software, make sure all connections are secure and no applications are running. Login to Windows XP or 2000 with an account that has administrator privilege. Close any applications that might be running and insert the MultiStation PC Quad CD. If the installation procedure does not start automatically, run the “Index.htm” program from the CD.

To begin the installation process, click on INSTALL and the Installation

Wizard will start. This software is copyrighted and you must agree to the license agreement to install and use this software. Read the license agreement as shown in Figure 5. If you agree click on the "I agree" button, if not, click "Cancel".

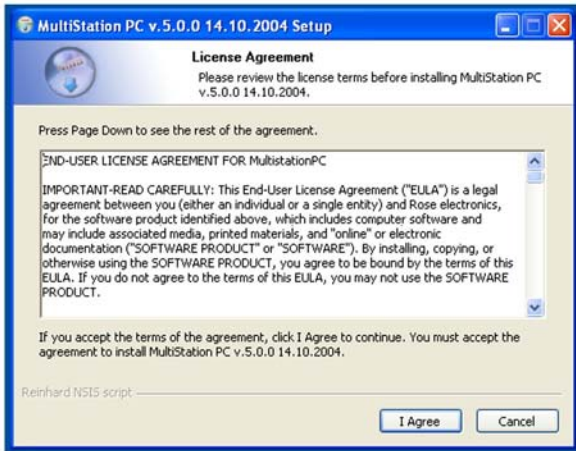


Figure 5. Software license agreement

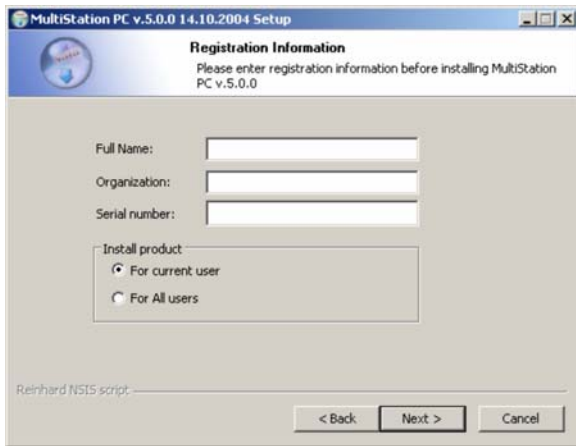


Figure 6. User information

Next, enter the requested User information as shown in Figure 6. Enter the user information and serial number. (Note: serial # is located on the installation CD) When all information has been entered, click "Next".

You can install the MultiStation PC Quad software in the default folder name “C:\Program Files\MultiStation PC Quad\” or change it to a folder name of your choosing by clicking on the “Browse” button. (Figure 7)

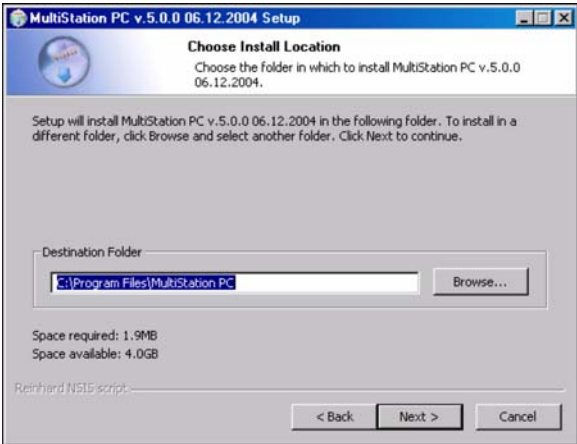


Figure 7. Destination folder

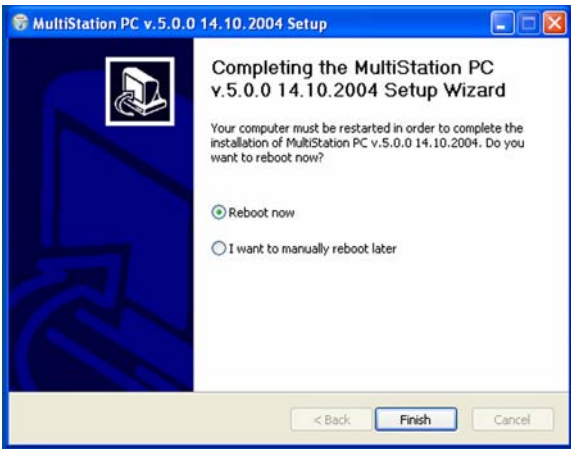


Figure 8. Installation successful

When the installation is complete, the final “Finish” screen will display. (Figure 8). Click on the “Finish” button and restart the computer to initialize and load the MultiStation PC Quad software.

User Operation

When the shared computer is first booted, the boot-up sequence can be seen on the monitor connected to the computer. The monitor connected to the remote user module will remain blank until the computer fully boots up and the login screen displays. After the computer fully boots up, the monitor connected to the user module will change from a blank screen to a blue screen and then to its login screen. If the monitor remains blank or the boot-up sequence is visible only on the monitor connected to the remote user module, refer to troubleshooting section to correct the problem. Due to the many differences in motherboards, Bios, and system configurations, some configuration of the MultiStation PC Quad's PCI card or the system BIOS may be needed to correct the video problem.

The MultiStation PC Quad, once installed and configured if needed, allows four remote users to independently use a single computer. Each user can login to Windows XP or 2000 with their custom desktop, screen saver, and Icons. They can run the same application or a different one simultaneously with no apparent performance degradation.

With the computer connected to a network, each user can connect to the network using a common network card and access network servers and printers. Each user can connect to the Internet using a common modem, phone or DSL line and one internet connection.

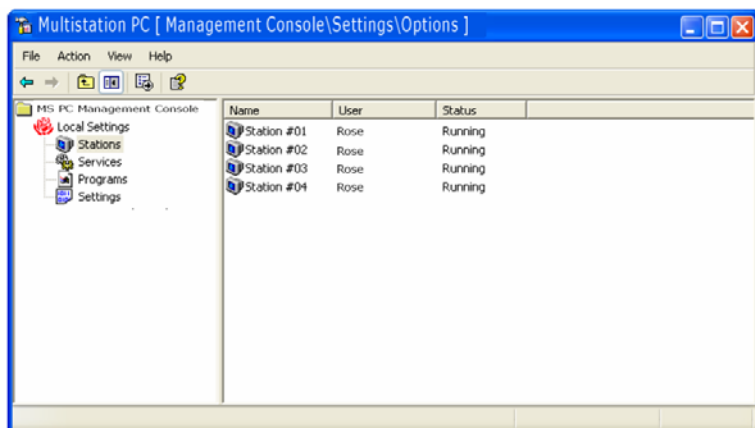



Figure 9. Console window

The MultiStation PC Quad installation will place a Console Icon  on the running task toolbar. Double click on this icon to bring up the MultiStation PC Quad settings (Figure 9).

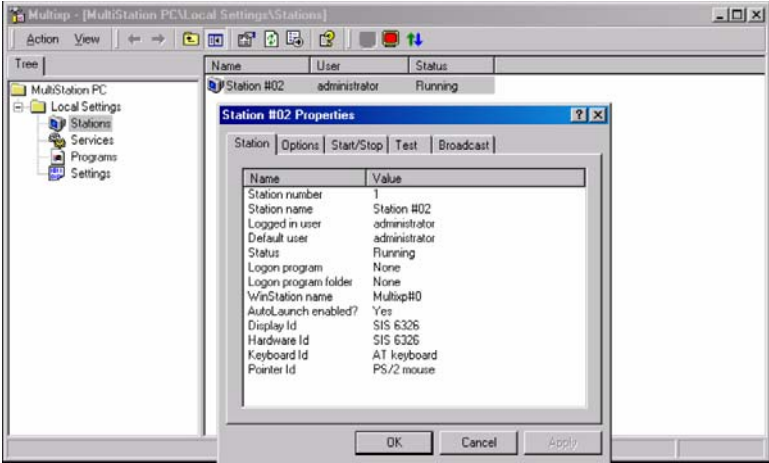


Figure 10. Station Properties

Under “Local settings”, select “Stations” and double clicking on the station name to display the stations properties (Figure 10). The “Station” tab displays information about the selected station.

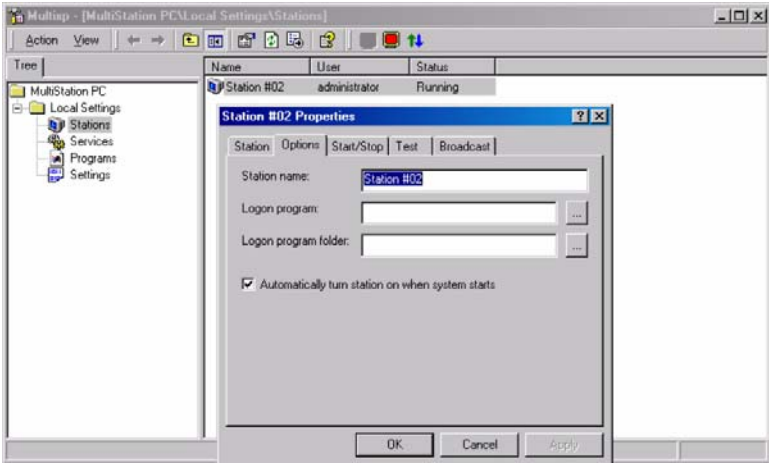


Figure 11. Station options

The ‘Option’ tab (Figure 11) allows you to name the station, assign a Logon program, logon program folder, and automatically turn the station on when the system starts.

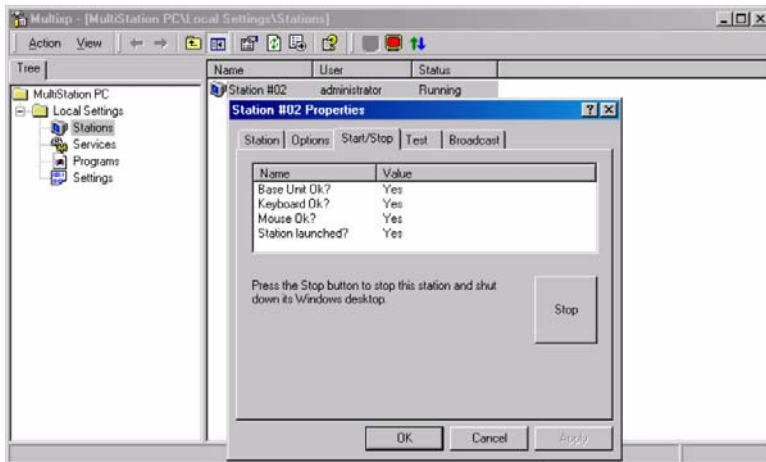


Figure 12. Start/Stop window

The “Start/Stop” tab displays the station’s status and allows you to stop the station and shut down its windows desktop (Figure 12).

Pressing the “Stop” button will stop the station. If the “Automatically turn station on when system starts” check box is not checked (refer to Figure 11), this button will display “Start” so you can start this station.

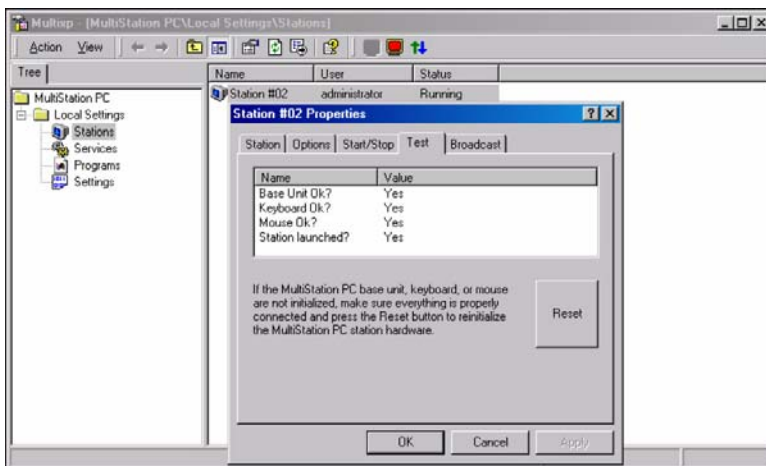


Figure 13. Test screen

The “Test” tab (Figure 13) verifies that the base unit, keyboard, and mouse are initialized and the station’s launch status. If any item is not initialized on start-up, the value for that item will be “No”. Check the item whose value is “No” and click on the “Reset” button. This will reinitialize the user module, keyboard, and mouse. The value should change from “No” to “Yes” for that item.

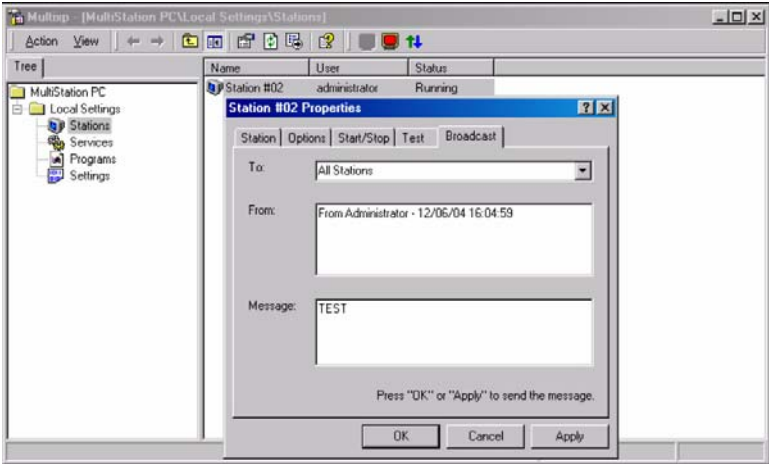


Figure 14. Broadcast message screen

The “Broadcast” tab (Figure 14) is a feature that will broadcast a message to the other station. Type in your message in the message box and click “OK”. The text message will display on the other station in a pop-up message box (Figure 15).

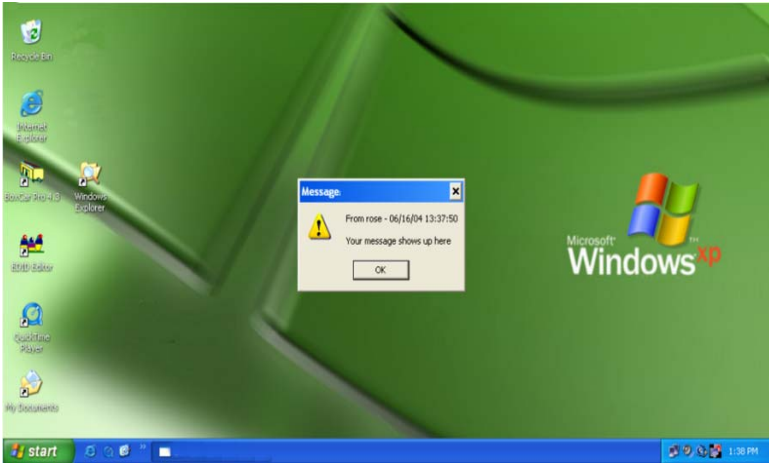


Figure 15. Message box

Service Information

Maintenance and Repair

This Unit does not contain any internal user-serviceable parts. In the event a Unit needs repair or maintenance, you must first obtain a Return Authorization (RA) number from Rose Electronics or an authorized repair center. This Return Authorization number must appear on the outside of the shipping container.

See Limited Warranty for more information.

When returning a Unit, it should be double-packed in the original container or equivalent, insured and shipped to:

Rose Electronics
Attn: RA _____
10707 Stancliff Road
Houston, Texas 77099 USA

Technical Support

If you are experiencing problems, or need assistance in setting up, configuring or operating your MultiStation PC Quad, consult the appropriate sections of this manual. If, however, you require additional information or assistance, please contact the Rose Electronics Technical Support Department at:

Phone: (281) 933-7673
E-Mail: TechSupport@rose.com
Web: www.rose.com

Technical Support hours are from: 8:00 am to 6:00 pm CST (USA), Monday through Friday.

Please report any malfunctions in the operation of this Unit or any discrepancies in this manual to the Rose Electronics Technical Support Department.

Safety

The MultiStation PC Quad has been tested for conformance to safety regulations and requirements, and has been certified for international use. Like all electronic equipment, the MultiStation PC Quad should be used with care. To protect yourself from possible injury and to minimize the risk of damage to the Unit, read and follow these safety instructions.

- Follow all instructions and warnings marked on this Unit.
- Except where explained in this manual, do not attempt to service this Unit yourself.
- Do not use this Unit near water.
- Assure that the placement of this Unit is on a stable surface.
- Provide proper ventilation and air circulation.
- Keep connection cables clear of obstructions that might cause damage to them.
- Use only power cords, power adapter and connection cables designed for this Unit.
- Keep objects that might damage this Unit and liquids that may spill, clear from this Unit. Liquids and foreign objects might come in contact with voltage points that could create a risk of fire or electrical shock.
- Do not use liquid or aerosol cleaners to clean this Unit. Always unplug this Unit from its electrical outlet before cleaning.
- Unplug this Unit refer servicing to a qualified service center if any of the following conditions occur:
 - The connection cables are damaged or frayed.
 - The Unit has been exposed to any liquids.
 - The Unit does not operate normally when all operating instructions have been followed.
 - The Unit has been dropped or the case has been damaged.
 - The Unit exhibits a distinct change in performance, indicating a need for service.

Safety and EMC Regulatory Statements

Safety information



Documentation reference symbol. If the product is marked with this symbol, refer to the product documentation to get more information about the product.

WARNING A WARNING in the manual denotes a hazard that can cause injury or death.

CAUTION A CAUTION in the manual denotes a hazard that can damage equipment.

Do not proceed beyond a WARNING or CAUTION notice until you have understood the hazardous conditions and have taken appropriate steps.

Grounding

These are Safety Class I products and have protective earthing terminals. There must be an un-interruptible safety earth ground from the main power source to the product's input wiring terminals, power cord, or supplied power cord set. Whenever it is likely that the protection has been impaired, disconnect the power cord until the ground has been restored.

Servicing

There are no user-serviceable parts inside these products. Only service-trained personnel must perform any servicing, maintenance, or repair.

The user may adjust only items mentioned in this manual.

Keyboard or mouse on remote user module does not work.

- Cable is loose; re-seat keyboard or mouse cable at the CPU and the remote user module and reset the keyboard and mouse (Refer to Figure 13)
- Keyboard and mouse cables reversed.

Boot-up sequence appears on the Remote user module monitor only

- The system BIOS is detecting the MultiStation PC Quad graphic adapter as the main display adapter. To correct this problem the BIOS/CMOS settings need to be changed.

BIOS/CMOS settings for AGP video adapter

- If the host display is AGP, verify that the BIOS setup shows the AGP adapter as the host adapter

Following are several examples of BIOS setups for different PC's.

1. Boot your system and enter the BIOS setup. Select "Integrated Peripherals" and press enter. Verify that the setting for "Init Display First" is correct. If the display adapter is AGP, this item should show "AGP".
2. Select "BIOS Features Setup", enter "VGA Boot from", and select the option "AGP"
3. Select "Integrated Peripherals" and press enter. Select "Init Display First", then select "Enabled".
4. Select "PNP, PCI & ON-BOARD I/O" and then select the "Init Display First" option.

OPTION 2B – PCI video adapter

If your main computer uses a PCI video adapter and the video is only displaying on the remote user module's monitor, power down your computer and remove the MultiStation PC Quad's PCI card and move your PCI video card to the slot that was occupied by the MultiStation PC Quad's PCI card. Do not install the MultiStation PC Quad's PCI card at this time. Re-boot your system and Windows XP will recognize the new hardware and install it. Re-install the MultiStation PC Quad's PCI card in the slot that was previously occupied by the PCI video adapter and reboot the system. The boot-up sequence should now appear on the video monitor connected to the PC and not on the monitor connected to the remote user module.

Installation of software causes conflicts with my resident programs

- If you experience installation conflicts with startup or resident applications, it would be advisable to un-install the MultiStation PC Quad software, reboot, then disable these applications, reboot, and reinstall the MultiStation PC Quad Software. Once you reinstall the MultiStation PC Quad software and reboot your PC, enable the startup or resident applications you disabled and reboot again.

NOTE:

Consult your Operating systems manual or vendor for instruction on disabling/enabling your startup and resident programs applications.

"Blue Screen" Page Fault Error Message Received after software install

- When the installation is completed, you will be prompted to re-boot your system. If you receive a blue screen "Page Fault Error Message" during the re-boot process, please call Rose Electronics Tech Support. It may be determined that your system board is not compatible with the MultiStation PC Quad software. This may be correctable with a firmware change.

Appendix A. General specifications

MultiStation PC Quad PCI card	
Bus Interface	4-Port PCI bus V2.1: 5V, 32bit, 33MHz
Video Chip	ATI Rage IIC
4 MB of SGRAM	Supports 1600 x 1200 High Color Supports 1024 x 768 True Color Supports 800 x 600 True Color Supports 640 x 480 True Color
Data Transfer Rate	Up to 132MB/sec
Cable	CATx STP (Shielded Twisted Pairs) cable
Distance	225 ft. (68.6m) maximum with optional cable
Dimensions / weight	4.8" x 12.4" (12.3 cm x 31.5 cm) / 0.45 lbs. (0.19 kg)
Operating Temp.	32°F - 104°F (0°C - 40°C)
Storage Temp.	-40°F - 140°F (-40°C - 60°C)
Humidity	20% - 90% non-condensing
MultiStation PC Quad remote user module	
Connectors	Power 9VAC external power adapter Keyboard PS/2 (MiniDin6F) Mouse PS/2 (MiniDin6F) Video DB15F LAN RJ45F USB Type A Printer DB25F COM1 DB9M Mic / Spk 3.5mm
Indicators	2-LEDs, System power and status
Dimensions / weight	1.1" x 11.5" x 4.4" / 2.2 lbs 2.8 x 29.2 x 11.2 cm / 1.0 kg
Power	Remote user module - 5W (From PCI card) Max power to keyboard – 1W (0.1A, 5V)
Environmental	Operating temp. 34° to 104°F (0° to 40° C) Storage temp. -40°F to 140°F (-40° to 60° C) Humidity - 20% to 90% non-condensing
Approvals	FCC Class B, CE

Appendix B. Parts and cables

Part Number	Description
MSP-PC45-XP	MultiStation PC Quad card /Module
CAB-08STP015	CATx cable

Appendix C. Tested hardware list

Motherboard	Manufacturer
D865GBF/D865PERC	Intel
D865PERL	Intel
P4R800-VM	ASUS
P4PE-X	ASUS
AB-BH6	Abit
845G MAX	MSI
PT880Neo NS-7008 Ver1	MSI
PA2013	FIC
M7NBA3	Biostar
M7NCG Pro Ver1.1	Biostar
K7VTA3 V.6	ECS
K7S5A Pro REV5	ECS
PT800CE-A Rev1	ECS
Dell Dimension 4600	P4
Dell Dimension 4600	Celeron
Dell Dimension 2400	P4
Dell Dimension 2400	Celeron
Dell Dimension 8300	Intel P4
Athlon AMD 761/VIA 686 b FIC AD11 3dfxVoodoo3 SIS 6326 Quad head 4 512 DDR 161	AMD
Athlon AMD 761/VIA 686 b FIC AD11 ATI Rage Pro 128 SIS 6326 Quad head 4 512 DDR 161	AMD
Athlon AMD 761/VIA 686 b FIC AD11 Geforce 2 MX Geforce 2 MX MX400 4 512 DDR 161	AMD
Athlon VIA VT 82C686B Gigabyte GA 7DX F3 SIS 300 analog + digital out SIS-6326 Quad head 4 512 DDR 158	AMD
ASUS P5P800	P4
ASUS P4P800 SE	P4
ASUS P4P800-VM	P4
ASUS P4P800S-X	P\$
ECS "848P-A V2.0" (848p Chipset Motherboard for Intel Socket	P4
ECS "865PE-A" i865PE Chipset Motherboard for Intel Socket 478	
EPoX "EP-4PDA3i-3" i865PE Chipset Motherboard for Intel	



Server Management



Solutions

10707 Stancliff Road
Houston, Texas 77099

Phone: (281) 933-7673
WWW.ROSE.COM